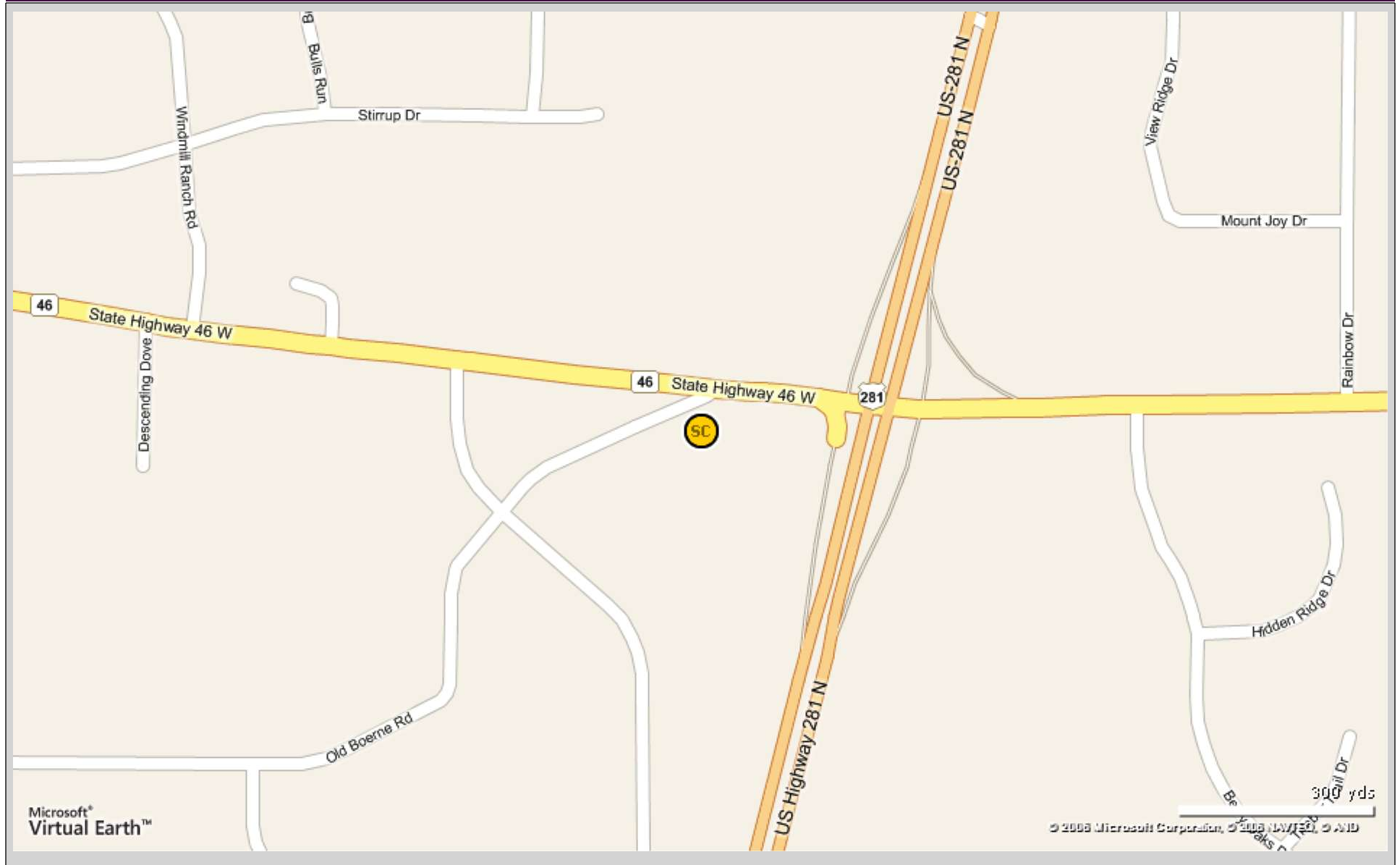


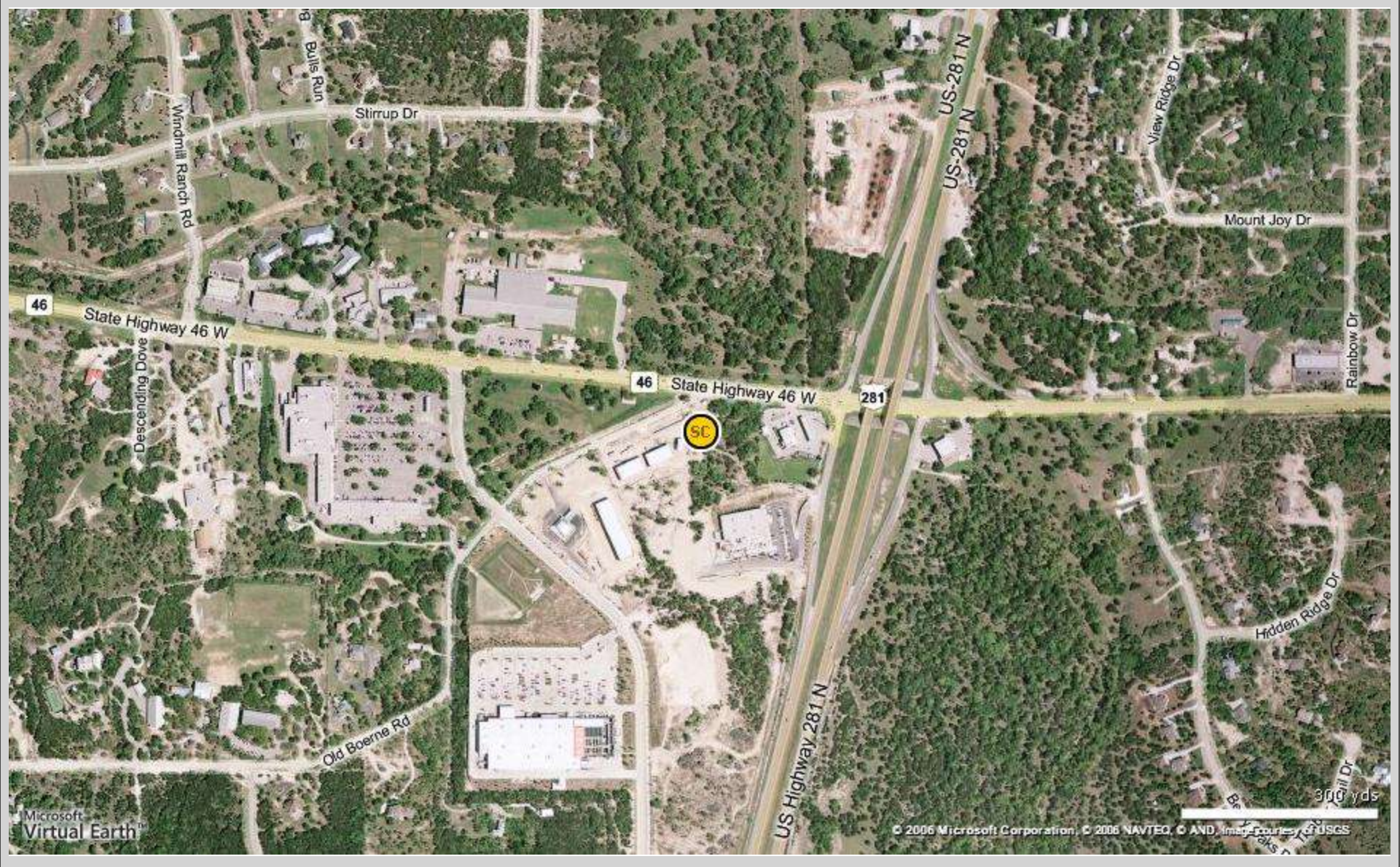
Bulverde Crossing

109 Old Boerne Rd - Spring Branch, TX 78070



Bulverde Crossing

109 Old Boerne Rd - Spring Branch, TX 78070



Demographic Detail Report

Bulverde Crossing

109 Old Boerne Rd, Spring Branch, TX 78070

Building Type: **Shopping Center**
 Center Type: **Strip Center**
 Center GLA: **13,200 SF**
 Year Built: **2007**

Total Available: **0 SF**
 % Leased: **100%**
 Rent/SF/Yr: -



Radius	1 Mile	3 Mile	10 Mile
Population			
2014 Projection	555	12,151	70,316
2009 Estimate	445	9,440	55,595
2000 Census	331	4,785	25,400
Growth 2009 - 2014	24.70%	28.70%	26.50%
Growth 2000 - 2009	34.40%	97.30%	118.90%
2009 Population by Age	445	9,440	55,595
Age 0 - 4	26 5.84%	530 5.61%	3,519 6.33%
Age 5 - 9	30 6.74%	612 6.48%	3,911 7.03%
Age 10 - 14	35 7.87%	713 7.55%	4,405 7.92%
Age 15 - 17	21 4.72%	436 4.62%	2,634 4.74%
Age 18 - 20	14 3.15%	317 3.36%	1,997 3.59%
Age 21 - 24	10 2.25%	257 2.72%	1,672 3.01%
Age 25 - 34	36 8.09%	735 7.79%	5,013 9.02%
Age 35 - 44	72 16.18%	1,386 14.68%	8,438 15.18%
Age 45 - 49	44 9.89%	942 9.98%	5,501 9.89%
Age 50 - 54	41 9.21%	901 9.54%	5,206 9.36%
Age 55 - 59	39 8.76%	848 8.98%	4,481 8.06%
Age 60 - 64	30 6.74%	658 6.97%	3,258 5.86%
Age 65 - 74	29 6.52%	689 7.30%	3,444 6.19%
Age 75 - 84	14 3.15%	318 3.37%	1,624 2.92%
Age 85 and over	5 1.12%	99 1.05%	493 0.89%
Age 16 and over	347 77.98%	7,438 78.79%	42,876 77.12%
Age 18 and over	333 74.83%	7,149 75.73%	41,126 73.97%
Age 21 and over	319 71.69%	6,833 72.38%	39,129 70.38%
Age 65 and over	48 10.79%	1,106 11.72%	5,561 10.00%
Median Age	42.20	43.20	40.90
Average Age	39.20	39.80	38.00

Demographic Detail Report

Bulverde Crossing

109 Old Boerne Rd, Spring Branch, TX 78070

Radius	1 Mile	3 Mile	10 Mile
2009 Population By Race	445	9,440	55,595
White	398 89.44%	8,482 89.85%	49,525 89.08%
Black or African American	2 0.45%	63 0.67%	476 0.86%
American Indian and Alaska Native	2 0.45%	47 0.50%	289 0.52%
Asian	4 0.90%	56 0.59%	661 1.19%
Native Hawaiian and Pacific Islander	0 0.00%	1 0.01%	9 0.02%
Other Race	27 6.07%	590 6.25%	3,199 5.75%
Two or More Races	12 2.70%	200 2.12%	1,437 2.58%
2009 Population by Hispanic Origin	446	9,440	55,593
Not Hispanic or Latino	342 76.68%	7,379 78.17%	41,863 75.30%
Hispanic or Latino:	103 23.09%	2,061 21.83%	13,732 24.70%
Mexican	75 16.82%	1,496 15.85%	9,816 17.66%
Puerto Rican	1 0.22%	17 0.18%	202 0.36%
Cuban	1 0.22%	14 0.15%	62 0.11%
Other Hispanic or Latino	27 6.05%	534 5.66%	3,650 6.57%
2009 Age 5+ Language at Home	420	8,911	52,076
Speak Only English	374 89.05%	8,042 90.25%	44,929 86.28%
Speak Asian or Pacific Island	1 0.24%	34 0.38%	215 0.41%
Speak IndoEuropean	10 2.38%	190 2.13%	1,552 2.98%
Speak Spanish	34 8.10%	639 7.17%	5,308 10.19%
Speak Other Language	1 0.24%	6 0.07%	72 0.14%
2009 Median Age, Male	42.00	43.10	40.80
2009 Average Age, Male	38.60	39.50	37.70
Median Age, Female	42.40	43.30	41.00
Average Age, Female	39.80	40.10	38.30
2009 Population by Employment Status (Age 16+)	347	7,438	42,876
In Armed Forces	2 0.58%	18 0.24%	316 0.74%
Civilian, Employed	206 59.37%	4,326 58.16%	25,788 60.15%
Civilian, Unemployed	9 2.59%	177 2.38%	1,400 3.27%
Not In Labor Force	130 37.46%	2,917 39.22%	15,372 35.85%
2009 Population by Occupation Classification (Age 16+)	207	4,326	25,789
Blue Collar	39 18.84%	857 19.81%	5,197 20.15%
White Collar	140 67.63%	2,884 66.67%	16,616 64.43%
Service	28 13.53%	585 13.52%	3,976 15.42%

Demographic Detail Report

Bulverde Crossing

109 Old Boerne Rd, Spring Branch, TX 78070

Radius	1 Mile	3 Mile	10 Mile
2000 Population by Marital Status (Age 15+)	355	7,585	43,760
Total, Never Married	72 20.28%	1,501 19.79%	9,061 20.71%
Married	232 65.35%	5,038 66.42%	28,766 65.74%
Widowed	11 3.10%	282 3.72%	1,632 3.73%
Divorced	40 11.27%	764 10.07%	4,301 9.83%
Males Divorced	12	171	800
Females Divorced	13	167	895
Males, Never Married	25	333	1,941
Females Never Married	21	317	1,532
2009 Population by Education	309	6,576	37,457
Less Than 9Th Grade	7 2.27%	136 2.07%	1,349 3.60%
Some High School, No Diploma	18 5.83%	339 5.16%	2,244 5.99%
High School Graduate (Includes Equivalency)	74 23.95%	1,623 24.68%	9,318 24.88%
Some College, No Degree	86 27.83%	1,863 28.33%	9,407 25.11%
Associate Degree	26 8.41%	514 7.82%	2,602 6.95%
Bachelor Degree	64 20.71%	1,345 20.45%	8,266 22.07%
Advanced Degrees	34 11.00%	756 11.50%	4,271 11.40%
2009 Population by Occupation (Age 16+)	234	4,911	29,765
Management, Business, & Financial	69 29.49%	1,422 28.96%	8,084 27.16%
Professional & Related Occupations	7 2.99%	146 2.97%	833 2.80%
Services	101 43.16%	2,113 43.03%	13,166 44.23%
Sales & Office	28 11.97%	560 11.40%	3,388 11.38%
Farming, Fishing, and Forestry	0 0.00%	10 0.20%	70 0.24%
Construction and Extraction, Maint	16 6.84%	329 6.70%	2,154 7.24%
Production & Transportation	13 5.56%	331 6.74%	2,070 6.95%
2009 Workers by Travel Time to Work (Age 16+)	207	4,344	26,104
Less Than 15 Minutes	21 10.14%	636 14.64%	3,916 15.00%
15 to 29 Minutes	56 27.05%	1,125 25.90%	8,443 32.34%
30 to 44 Minutes	79 38.16%	1,454 33.47%	8,264 31.66%
45 to 59 Minutes	37 17.87%	753 17.33%	3,358 12.86%
60+ Minutes	14 6.76%	376 8.66%	2,123 8.13%

Demographic Detail Report

Bulverde Crossing

109 Old Boerne Rd, Spring Branch, TX 78070

Radius	1 Mile	3 Mile	10 Mile
Households			
2014 Projection	214	4,203	24,446
2009 Estimate	171	3,259	19,329
2000 Census	129	1,666	8,994
Growth 2009 - 2014	25.10%	29.00%	26.50%
Growth 2000 - 2009	32.60%	95.60%	114.90%
2000 Households by HH Size			
	129	1,665	8,993
1-Person Households	19 14.73%	229 13.75%	1,346 14.97%
2-Person Households	48 37.21%	610 36.64%	3,288 36.56%
3-Person Households	24 18.60%	320 19.22%	1,646 18.30%
4-Person Households	22 17.05%	293 17.60%	1,633 18.16%
5-Person Households	11 8.53%	146 8.77%	724 8.05%
6-Person Households	3 2.33%	40 2.40%	227 2.52%
7 or more Person Households	2 1.55%	27 1.62%	129 1.43%
2009 Average Household Size			
	2.60	2.90	2.87
2009 Households by HH Income			
	172	3,257	19,329
Income Less than \$15,000	5 2.91%	124 3.81%	905 4.68%
Income: \$15,000 - \$24,999	8 4.65%	133 4.08%	992 5.13%
Income: \$25,000 - \$34,999	13 7.56%	230 7.06%	1,378 7.13%
Income: \$35,000 - \$49,999	16 9.30%	283 8.69%	2,016 10.43%
Income: \$50,000 - \$74,999	38 22.09%	839 25.76%	3,754 19.42%
Income: \$75,000 - \$99,999	38 22.09%	693 21.28%	3,469 17.95%
Income: \$100,000 - \$149,999	34 19.77%	588 18.05%	3,677 19.02%
Income: \$150,000 - \$249,999	15 8.72%	306 9.40%	2,246 11.62%
Income: \$250,000 - \$499,999	4 2.33%	53 1.63%	721 3.73%
Income: \$500,000 or more	1 0.58%	8 0.25%	171 0.88%
2009 Avg Household Income	\$92,964	\$90,287	\$101,805
2009 Med Household Income	\$77,530	\$75,472	\$78,330
2009 Per Capita Income	\$32,845	\$31,486	\$35,185
2009 Occupied Housing			
	171	3,259	19,329
Owner Occupied	155 90.64%	3,047 93.49%	17,310 89.55%
Renter Occupied	16 9.36%	212 6.51%	2,019 10.45%

Demographic Detail Report

Bulverde Crossing

109 Old Boerne Rd, Spring Branch, TX 78070

Radius	1 Mile		3 Mile		10 Mile	
2009 Housing Value - Owner Occupied	155		3,047		17,310	
Value Less than \$20,000	1	0.65%	13	0.43%	197	1.14%
Value \$20,000 - \$39,999	4	2.58%	46	1.51%	527	3.04%
Value \$40,000 - \$59,999	9	5.81%	95	3.12%	810	4.68%
Value \$60,000 - \$79,999	6	3.87%	97	3.18%	1,012	5.85%
Value \$80,000 - \$99,999	11	7.10%	256	8.40%	943	5.45%
Value \$100,000 - \$149,999	25	16.13%	477	15.65%	2,616	15.11%
Value \$150,000 - \$199,999	14	9.03%	339	11.13%	2,467	14.25%
Value \$200,000 - \$299,999	37	23.87%	784	25.73%	4,627	26.73%
Value \$300,000 - \$399,999	21	13.55%	427	14.01%	1,883	10.88%
Value \$400,000 - \$499,999	13	8.39%	251	8.24%	942	5.44%
Value \$500,000 - \$749,999	7	4.52%	139	4.56%	707	4.08%
Value \$750,000 - \$999,999	2	1.29%	50	1.64%	282	1.63%
Value \$1,000,000 or more	5	3.23%	73	2.40%	297	1.72%
2009 Med Housing Val-Owner Occupied	\$220,238		\$222,748		\$201,387	
2000 Housing Units by Units in Structure	152		1,781		9,755	
1 Unit Attached	0	0.00%	6	0.34%	69	0.71%
1 Unit Detached	115	75.66%	1,313	73.72%	6,970	71.45%
2 Units	1	0.66%	9	0.51%	36	0.37%
3 - 19 Units	0	0.00%	7	0.39%	65	0.67%
20 - 49 Units	0	0.00%	0	0.00%	4	0.04%
50 or more Units	0	0.00%	0	0.00%	12	0.12%
Mobile Home or Trailer	34	22.37%	423	23.75%	2,521	25.84%
Boat, RV, Van, Etc.	2	1.32%	23	1.29%	78	0.80%
2009 Housing Units by Yr Built	181		3,526		21,246	
Built 1999 to Present	81	44.75%	1,859	52.72%	12,143	57.15%
Built 1995 to 1998	30	16.57%	546	15.48%	2,392	11.26%
Built 1990 to 1994	20	11.05%	254	7.20%	1,566	7.37%
Built 1980 to 1989	21	11.60%	402	11.40%	2,437	11.47%
Built 1970 to 1979	18	9.94%	299	8.48%	1,707	8.03%
Built 1960 to 1969	5	2.76%	67	1.90%	569	2.68%
Built 1950 to 1959	1	0.55%	18	0.51%	153	0.72%
Built 1940 to 1949	1	0.55%	10	0.28%	46	0.22%
Built 1939 or Earlier	4	2.21%	71	2.01%	233	1.10%
2009 Median Year Built	1998		2000		2000	

Bulverde Crossing

109 Old Boerne Rd, Spring Branch, TX 78070

Building Type: **Shopping Center**
 Center Type: **Strip Center**
 Center GLA: **13,200 SF**
 Year Built: **2007**

Total Available: **0 SF**
 % Leased: **100%**
 Rent/SF/Yr: **-**



Radius	1 Mile	3 Mile	10 Mile
Population			
2014 Projection	555	12,151	70,316
2009 Estimate	445	9,440	55,595
2000 Census	331	4,785	25,400
Growth 2009 - 2014	24.70%	28.70%	26.50%
Growth 2000 - 2009	34.40%	97.30%	118.90%
2009 Population by Hispanic Origin	103	2,061	13,732
2009 Population By Race	445	9,440	55,595
White	398 89.44%	8,482 89.85%	49,525 89.08%
Black or African American	2 0.45%	63 0.67%	476 0.86%
American Indian and Alaska Native	2 0.45%	47 0.50%	289 0.52%
Asian	4 0.90%	56 0.59%	661 1.19%
Native Hawaiian and Pacific Islander	0 0.00%	1 0.01%	9 0.02%
Other Race	27 6.07%	590 6.25%	3,199 5.75%
Two or More Races	12 2.70%	200 2.12%	1,437 2.58%
Households			
2014 Projection	214	4,203	24,446
2009 Estimate	171	3,259	19,329
2000 Census	129	1,666	8,994
Growth 2009 - 2014	25.10%	29.00%	26.50%
Growth 2000 - 2009	32.60%	95.60%	114.90%
Owner Occupied	155 90.64%	3,047 93.49%	17,310 89.55%
Renter Occupied	16 9.36%	212 6.51%	2,019 10.45%
2009 Households by HH Income	172	3,257	19,329
Income Less Than \$15,000	5 2.91%	124 3.81%	905 4.68%
Income: \$15,000 - \$24,999	8 4.65%	133 4.08%	992 5.13%
Income: \$25,000 - \$34,999	13 7.56%	230 7.06%	1,378 7.13%
Income: \$35,000 - \$49,999	16 9.30%	283 8.69%	2,016 10.43%
Income: \$50,000 - \$74,999	38 22.09%	839 25.76%	3,754 19.42%
Income: \$75,000 - \$99,999	38 22.09%	693 21.28%	3,469 17.95%
Income: \$100,000 - \$149,999	34 19.77%	588 18.05%	3,677 19.02%
Income: \$150,000 - \$249,999	15 8.72%	306 9.40%	2,246 11.62%
Income: \$250,000 - \$499,999	4 2.33%	53 1.63%	721 3.73%
Income: \$500,000 or more	1 0.58%	8 0.25%	171 0.88%
2009 Avg Household Income	\$92,964	\$90,287	\$101,805
2009 Med Household Income	\$77,530	\$75,472	\$78,330
2009 Per Capita Income	\$32,845	\$31,486	\$35,185

Bulverde Crossing

109 Old Boerne Rd, Spring Branch, TX 78070

Building Type: **Shopping Center**
 Center Type: **Strip Center**
 Center GLA: **13,200 SF**
 Year Built: **2007**

Total Available: **0 SF**
 % Leased: **100%**
 Rent/SF/Yr: **-**



Description	2000 Census	2009 Estimate	2014 Projection
Population	331	445	555
Age 0 - 4	20 6.04%	26 5.84%	32 5.77%
Age 5 - 9	24 7.25%	30 6.74%	37 6.67%
Age 10 - 14	30 9.06%	35 7.87%	43 7.75%
Age 15 - 17	17 5.14%	21 4.72%	25 4.50%
Age 18 - 20	10 3.02%	14 3.15%	17 3.06%
Age 21 - 24	7 2.11%	10 2.25%	13 2.34%
Age 25 - 34	30 9.06%	36 8.09%	46 8.29%
Age 35 - 44	66 19.94%	72 16.18%	82 14.77%
Age 45 - 49	31 9.37%	44 9.89%	46 8.29%
Age 50 - 54	28 8.46%	41 9.21%	51 9.19%
Age 55 - 59	22 6.65%	39 8.76%	51 9.19%
Age 60 - 64	16 4.83%	30 6.74%	42 7.57%
Age 65 - 74	18 5.44%	29 6.52%	46 8.29%
Age 75 - 84	9 2.72%	14 3.15%	19 3.42%
Age 85 and over	2 0.60%	5 1.12%	6 1.08%
Age 16 and over	250 75.53%	347 77.98%	419 75.50%
Age 18 and over	239 72.21%	333 74.83%	402 72.43%
Age 21 and over	229 69.18%	319 71.69%	436 78.56%
Age 65 and over	29 8.76%	48 10.79%	71 12.79%
Median Age	39	42	43
Average Age	37	39	40
Population By Race	331	445	555
White	307 92.75%	398 89.44%	488 87.93%
Black or African American	1 0.30%	2 0.45%	3 0.54%
American Indian and Alaska Native	2 0.60%	2 0.45%	3 0.54%
Asian	2 0.60%	4 0.90%	5 0.90%
Native Hawaiian and Pacific Islander	0 0.00%	0 0.00%	0 0.00%
Other Race	14 4.23%	27 6.07%	40 7.21%
Two or More Races	7 2.11%	12 2.70%	15 2.70%

Bulverde Crossing

109 Old Boerne Rd, Spring Branch, TX 78070

Description	2000 Census	2009 Estimate	2014 Projection
Population by Race (Hispanic or Latino)	51	103	150
White	34 66.67%	69 66.99%	101 67.33%
Black or African American	0 0.00%	0 0.00%	0 0.00%
American Indian & Alaska Native	1 1.96%	1 0.97%	1 0.67%
Asian	0 0.00%	1 0.97%	1 0.67%
Native Hawaiian & Pacific Islander	0 0.00%	0 0.00%	0 0.00%
Other Race	13 25.49%	26 25.24%	39 26.00%
Two or More Races	3 5.88%	6 5.83%	8 5.33%
Household by Household Income	129	172	213
Income Less than \$15,000	6 4.65%	5 2.91%	6 2.82%
Income \$15,000 - \$24,999	13 10.08%	8 4.65%	9 4.23%
Income \$25,000 - \$34,999	8 6.20%	13 7.56%	14 6.57%
Income \$35,000 - \$49,999	18 13.95%	16 9.30%	20 9.39%
Income \$50,000 - \$74,999	34 26.36%	38 22.09%	41 19.25%
Income \$75,000 - \$99,999	24 18.60%	38 22.09%	61 28.64%
Income \$100,000 - \$149,999	16 12.40%	34 19.77%	38 17.84%
Income \$150,000 - \$249,999	7 5.43%	15 8.72%	18 8.45%
Income \$250,000 - \$499,999	3 2.33%	4 2.33%	5 2.35%
Average Household Income	\$74,992	\$92,964	\$93,544
Median Household Income	\$64,097	\$77,530	\$79,534
Per Capita Income	\$25,915	\$32,845	\$33,441
Households by Age of Householder	129	171	213
Householder Under 25 Years	2 1.55%	2 1.17%	2 0.94%
Householder 25 - 34 Years	11 8.53%	13 7.60%	17 7.98%
Householder 35 - 44 Years	37 28.68%	38 22.22%	42 19.72%
Householder 45 - 54 Years	35 27.13%	47 27.49%	53 24.88%
Householder 55 - 64 Years	24 18.60%	42 24.56%	55 25.82%
Householder 65 - 74 Years	12 9.30%	18 10.53%	29 13.62%
Householder 75+ Years	8 6.20%	11 6.43%	15 7.04%
Median Age of Householder	49.10	51.90	53.60